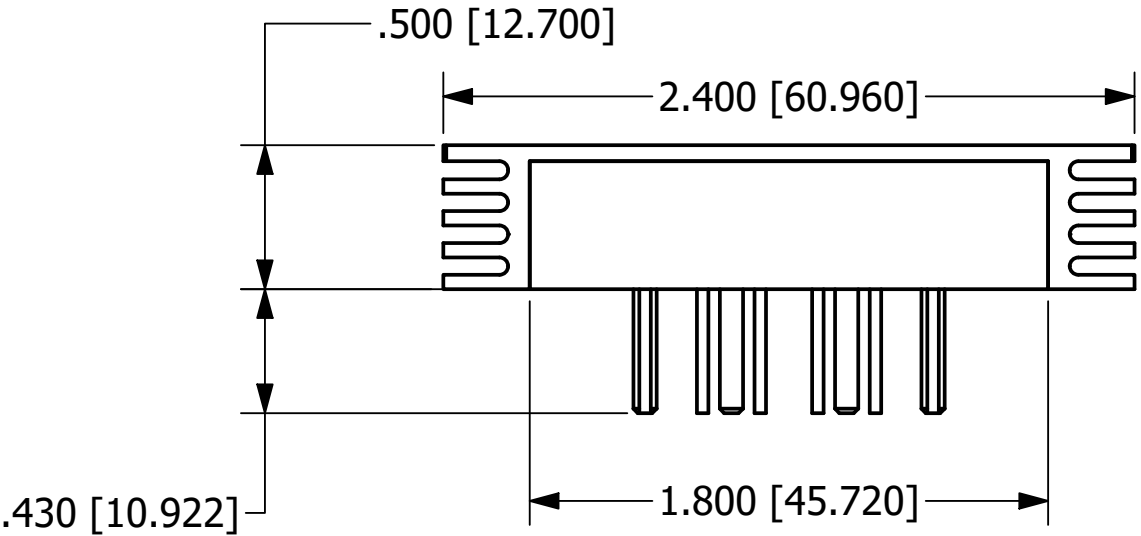
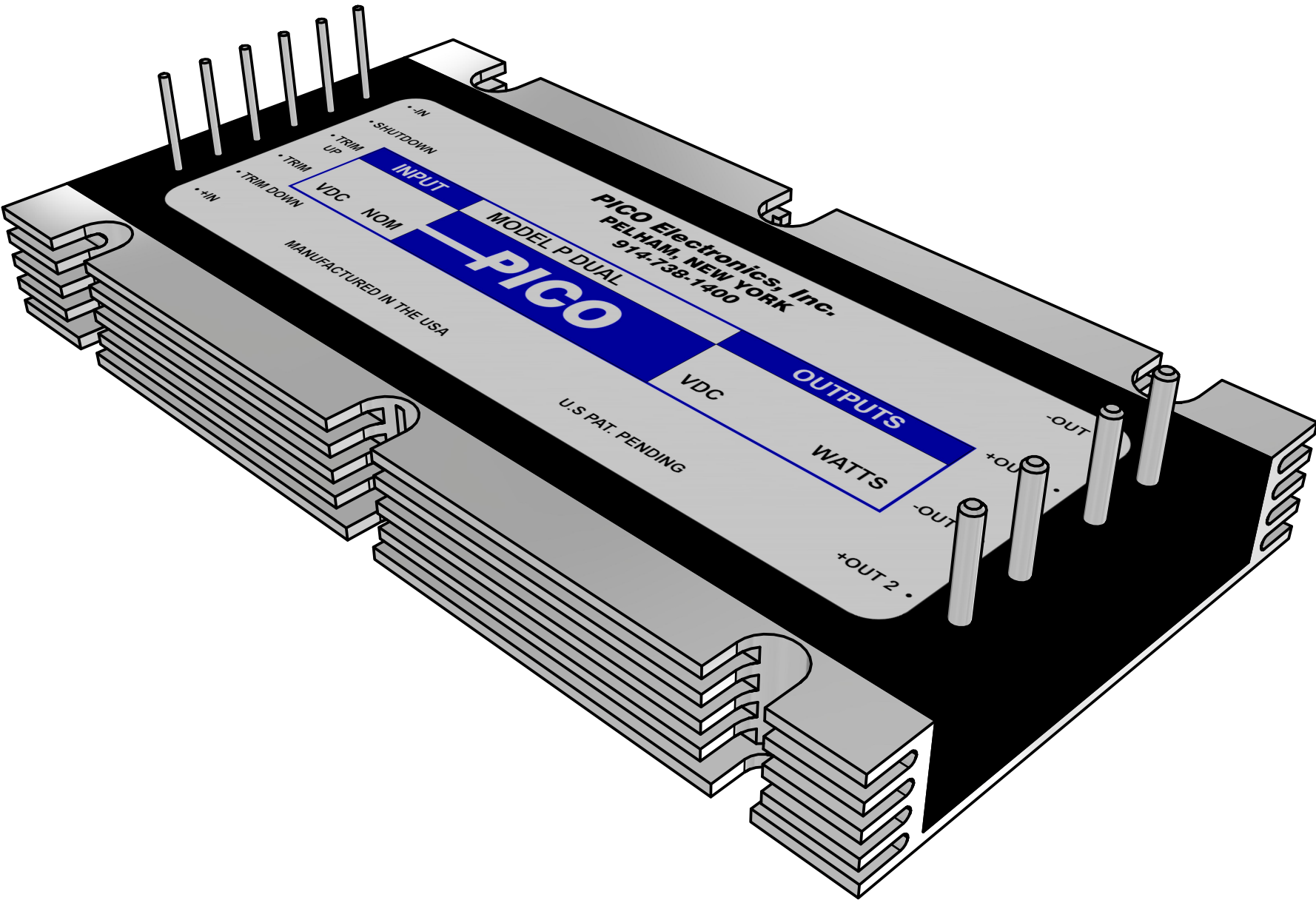
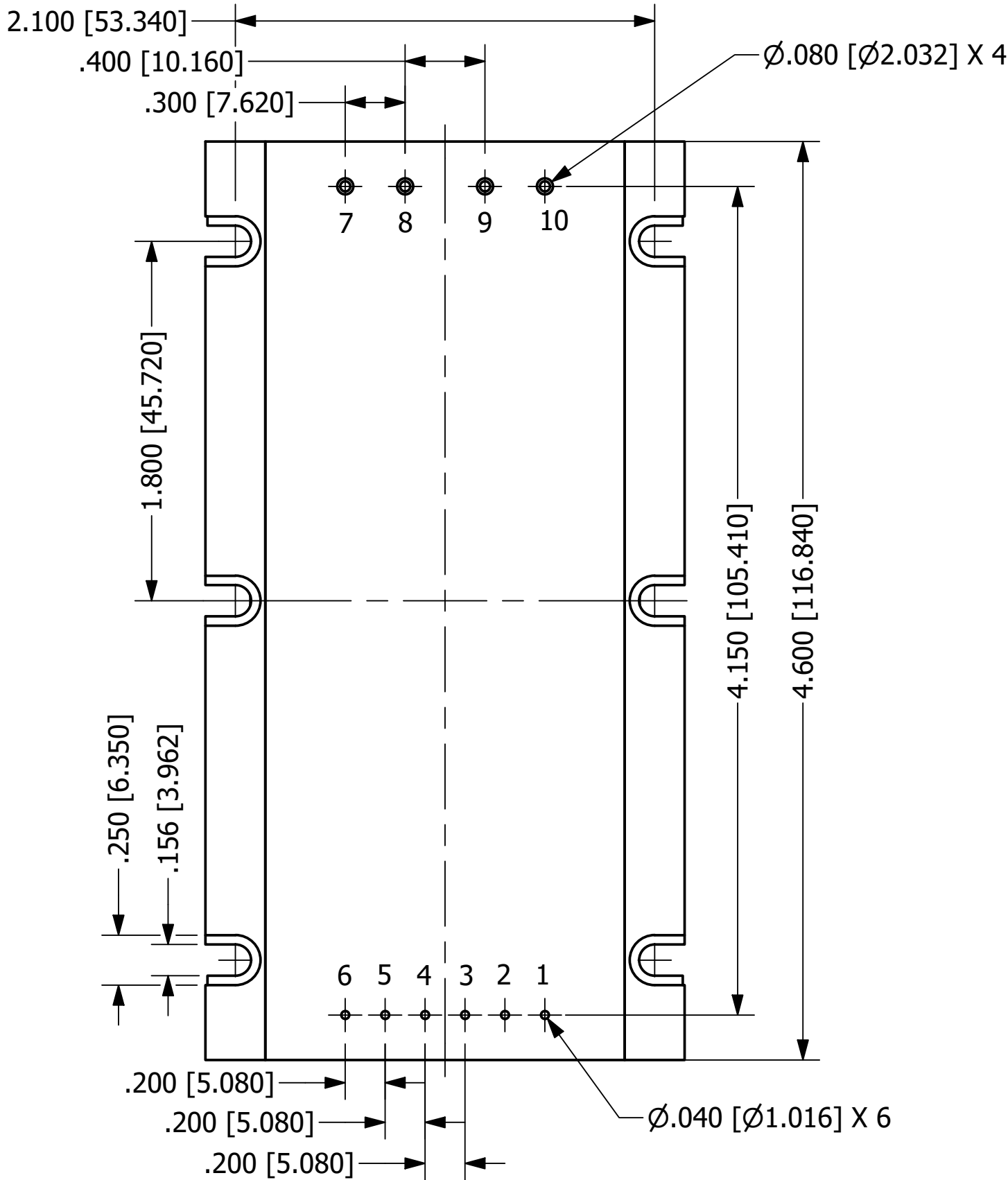


- NOTES**
- a. ALL DIMENSIONS ARE IN INCHES, [ ] = MM
  - b. RECOMMENDED TORQUE FOR MOUNTING SCREWS: 6-9 LBS



PIN NO.	FUNCTION	PIN DIA.
1	+IN	.040
2	TRIM DOWN	.040
3	TRIM	.040
4	TRIM UP	.040
5	SHUT DOWN	.040
6	-IN	.040
7	-OUT	.080
8	+OUT	.080
9	-OUT2	.080
10	+OUT2	.080



**BOTTOM VIEW**

**PROPRIETARY AND CONFIDENTIAL**

THE INFORMATION CONTAINED IN THIS DRAWING IS THE SOLE PROPERTY OF PICO ELECTRONICS INC. ANY REPRODUCTION IN PART OR AS A WHOLE WITHOUT THE WRITTEN PERMISSION OF PICO ELECTRONICS INC. IS PROHIBITED

DRAWN	P.PALUCH	<b>PICO</b> Electronics 143 Sparks Ave Village of Pelham, NY 10803		
CHECKED	H. VIDAURRE			
QA		<b>SERIES P - DUAL</b>		
MFG				
APPROVED		SIZE	DWG NO	REV
REVISION DATE	06/06/2023	C		1
		SCALE	NTS	www.picoelectronics.com